



## Frequently asked questions regarding the CMS Volunteer registration page

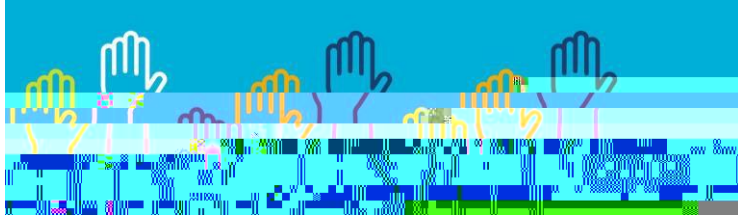
### Q & A

1. I do not remember if I have already registered as a volunteer in the past.

If you have previously registered as a volunteer in the past (up to 15 years ago), the system will display this message: This appears to be a DUPLICATE volunteer

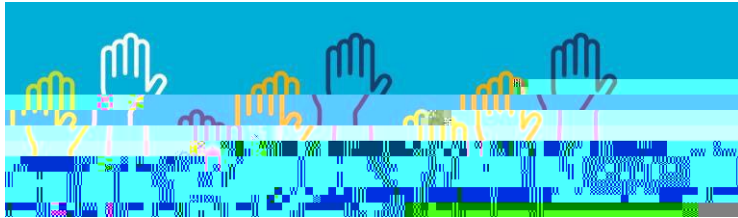
2. What should I do if I do not remember my login or password?

Please visit [www.cmsvolunteers.com](http://www.cmsvolunteers.com) and select Retrieve Login or Reset Password

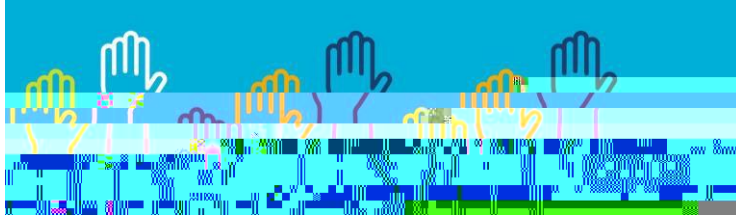


If you no longer have access to the email ~~you~~ used when you first registered ~~as~~ a volunteer in CI736y2  
or 1 102.98 420.078 or 2(o)-5( l)12(o)-5( l) t 3(r)ea2 re W\* n BT /F)72red





3. I entered



7. How can I find the volunteer needs at my school?

For volunteer needs and opportunities, please contact your school directly. Each of our 180 schools has a volunteer coordinator assigned to implement and share with staff, parents and community members the volunteer requirements, rules and regulations.

For further questions, please contact the CMS Volunteers Office by emailing [cmsvolunteers@cmsvolunteers.com](mailto:cmsvolunteers@cmsvolunteers.com)

**THANK YOU FOR VOLUNTEERING CMS!**

